



## The RAXTAR Common Tower - unequalled safety and modularity

### **RX COMMON TOWER – The Safer Access Tower for High Rises**



RAXTAR, the specialist in vertical access solutions, introduces a new unique modular logistical hub for construction sites: RX Common Tower. The RX Common Tower was developed to help maximize the transport of people and materials whilst taking up the least amount of footprint and minimum space required for access into the building. The RX Common Tower provides compelling advantages over the “traditional” systems available in the market.

- Independent erection and dismantling resulting in less hoist usage and no crane time.
- Less labor during erection and this dismantling (saving over 20%).
- Increased safety for crews with no heavy or rope lifting and no climbing.
- Safety first - complete safe working environment at height during installation and dismantling due to the RX Cocoon.
- The modularity of the RX Common Tower supports different hoist models and systems.

**RAXTAR**

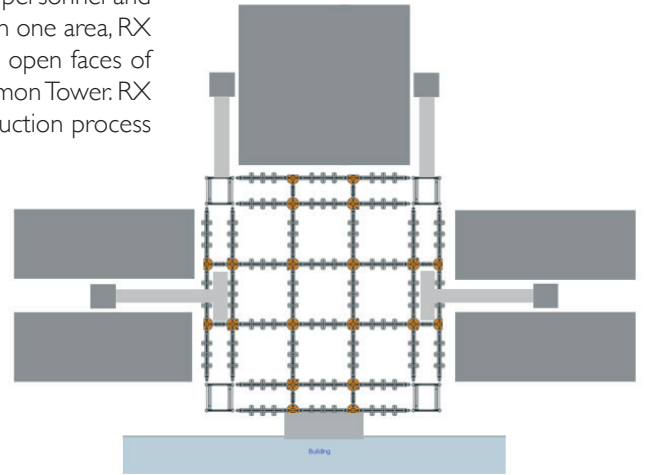
De Run 4455  
5503 LS VELDHOVEN  
The Netherlands

**T** +31 (0) 88 369 0000  
**F** +31 (0) 88 369 0001  
**E** sales@raxtar.com  
**I** www.raxtar.com

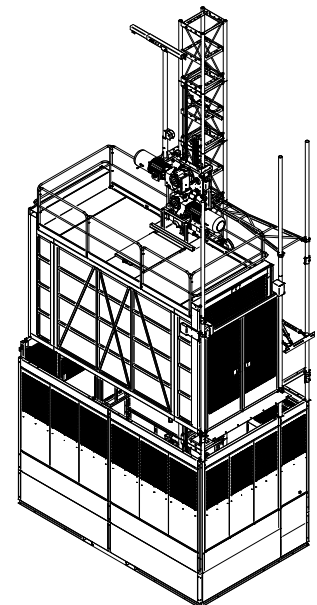
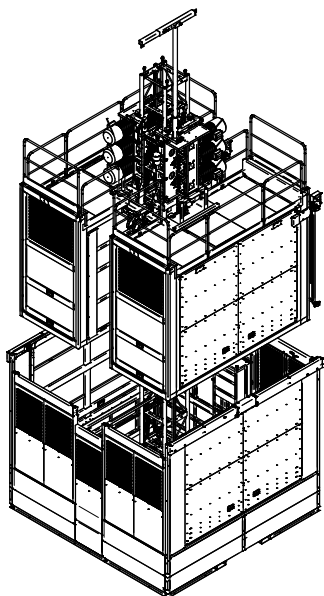
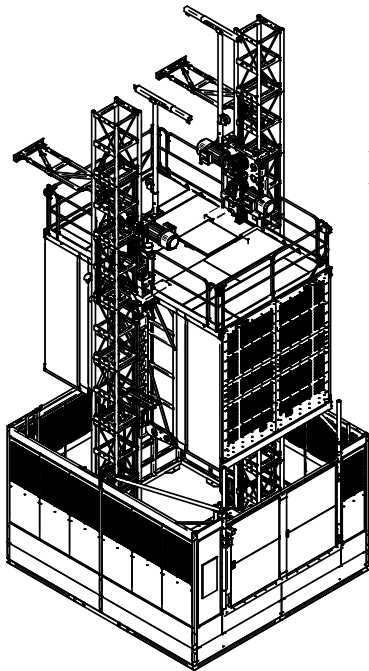
 @ RAXTARHOISTS  
 @ RAXTARHOISTS  
 @ RAXTAR

RX Common Tower systems are highly efficient logistical hubs for transporting personnel and materials into high rise buildings under construction. By concentrating hoisting in one area, RX Common Tower systems allow the building facades to be installed around the open faces of the building, whilst keeping only a limited access point open from the RX Common Tower. RX Common Towers enable finishing work to start in an early stage of the construction process whilst the main structure is still under construction and grows in height.

RAXTAR offers a special range of dual mast frequency driven hoists for large sized materials such as prefabricated bathrooms and kitchens (pods). The RX twin mast hoists can be combined with the RX Common Tower system and lift up to 5000 kg with a lifting speed of 42 m/min. Inside clear dimensions are (LxWxH) 5.50 x 3.00 x 2.70 m / 18'x9'10"x9'.



RX Common Tower has been designed to be completely independent of other job site resources for erection and dismantling. RX Common Tower systems result in increased hoist availability compared to conventional systems and do not require crane time during erection and dismantling. RX Common Tower systems require over 20% less labor than conventional systems, whilst increasing safety by providing a complete safe working environment at height during installation and dismantling. No climbing and heavy lifting for crew and no rope lifting. The modularity of the RX Common Tower system supports different hoist models and Common Tower layouts.



RX Passenger & Materials hoists available in single car or twin car configurations (i.e. 1 or 2 hoist cabins on 1 mast) with payloads of 2700 to 3600 kg / 6000 to 8000 lbs with lifting speeds of 72 to 92 m/min. / 235 to 300 fpm and standard cabin sizes of (LxWxH) 3.90 or 4.40 x 1.52 x 2.60 m / 12'9½" or 14'5"x5x8'6". A single RX Common tower can accommodate up to 3 twin car hoist configurations, i.e. 6 hoist cabins.

All RAXTAR hoists can be fitted with the RXControl system. This remote monitoring system allows real-time access to all RAXTAR hoists on your jobsite in a single view. As a result, continuous management and troubleshooting can be applied. Managing hoists through RXControl enables operations and jobsite managers to optimize their hoist utilization proactively.

RAXTAR offers Passenger & Materials hoists on a single mast with wider cabins (2.50 m) / (8'2½") and increased cabin lengths (5.50 m) (18') to accommodate transport of larger sized materials. Contact RAXTAR to match your requirements for lifting materials with the right hoist configuration.